



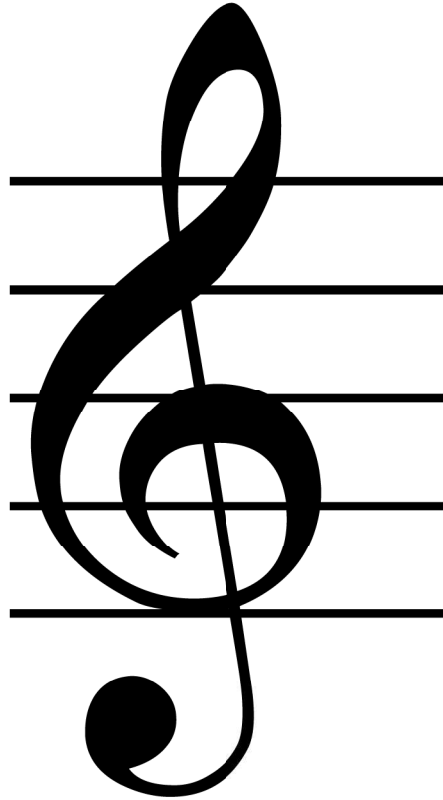
Music Notation
Flash Cards



American English Edition



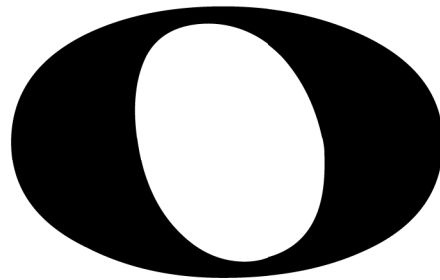
©2013 Moran Education. All rights reserved. Photocopying and all other forms of mechanical or electronic reproduction prohibited.



Treble Clef

The Treble Clef is sometimes known as the 'G' Clef.

It is the most widely used clef in music.



Whole Note

*1 whole note = 4 quarter
note beats*

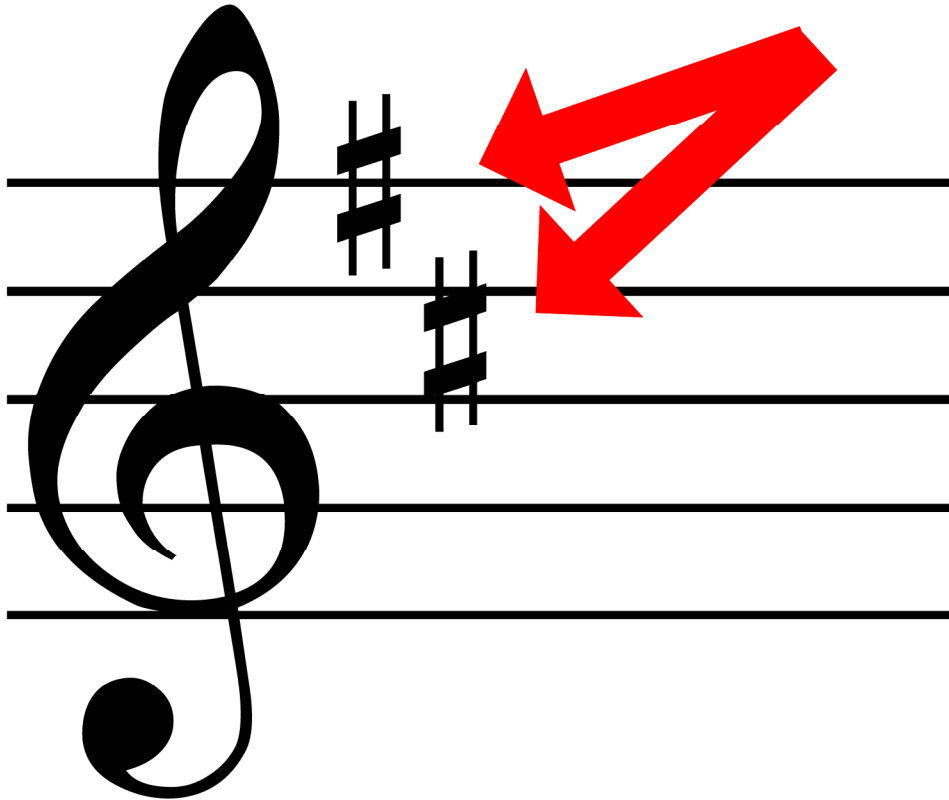




Quarter Note Rest

*1 quarter note rest = half
the value of a half note, or
one quarter of the value of
a whole note.*

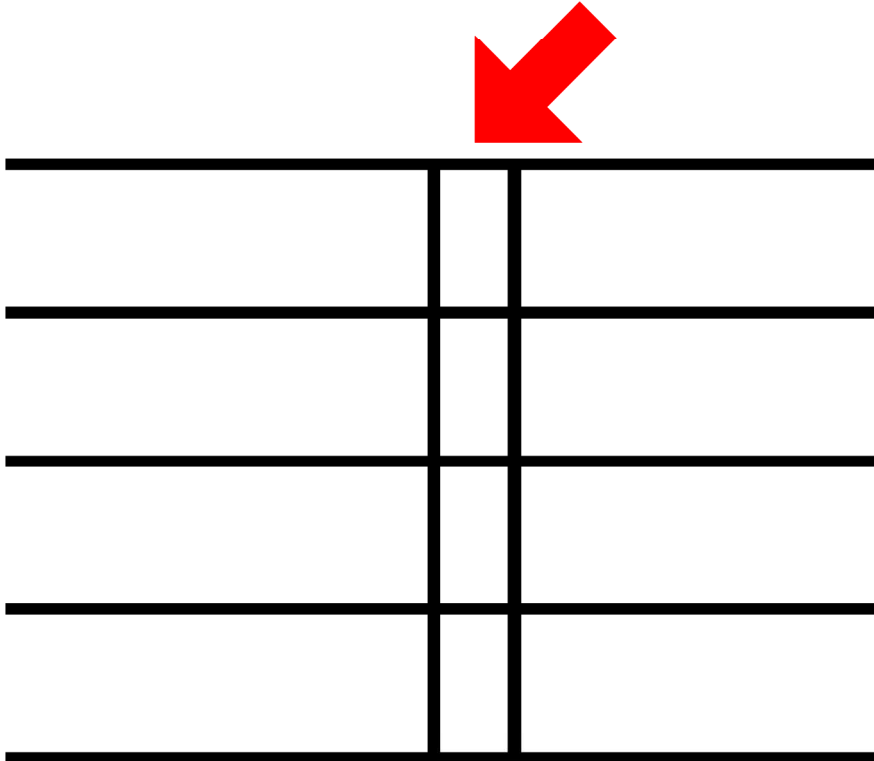




Key Signature

The Key Signature is the collection of sharps or flats (not both) shown at the beginning of a piece of music after the clef. These signify the key the music is to be played in.

The Key Signature is repeated on each new line.



Double Bar Line

The Double Bar Line is used to separate different sections of music.

It is also used whenever there is a change in the time signature or key signature.